

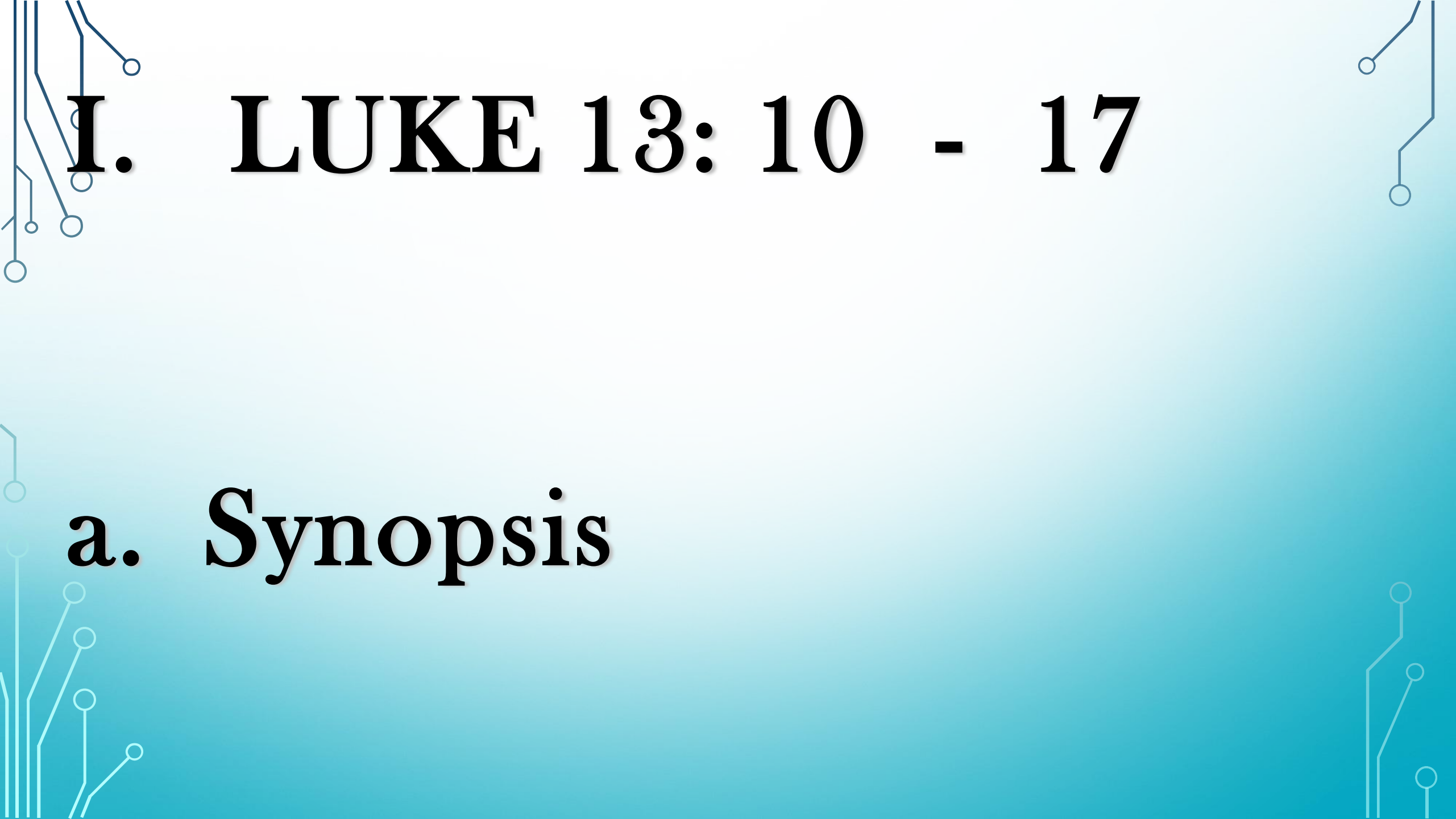
LUKE 13: 10 – 17

SHACKLED BY A
HEAVY BURDEN



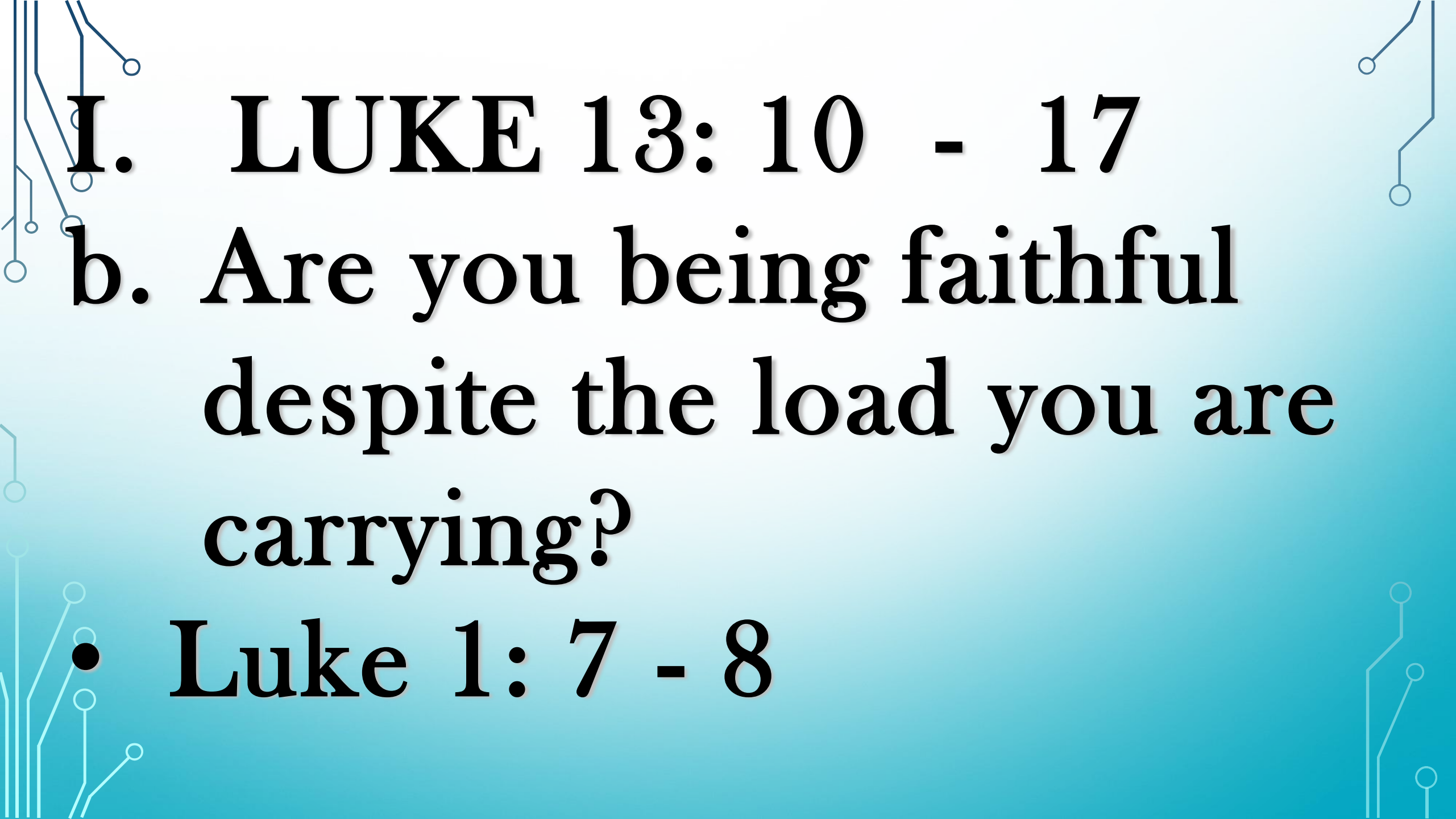
The background features a light blue gradient. In the corners, there are decorative circuit-like patterns. The top-left and bottom-left corners have dark blue lines, while the top-right and bottom-right corners have light blue lines. These lines form various geometric shapes, including circles and straight segments, resembling a stylized circuit board.

INTRODUCTION



I. LUKE 13: 10 - 17

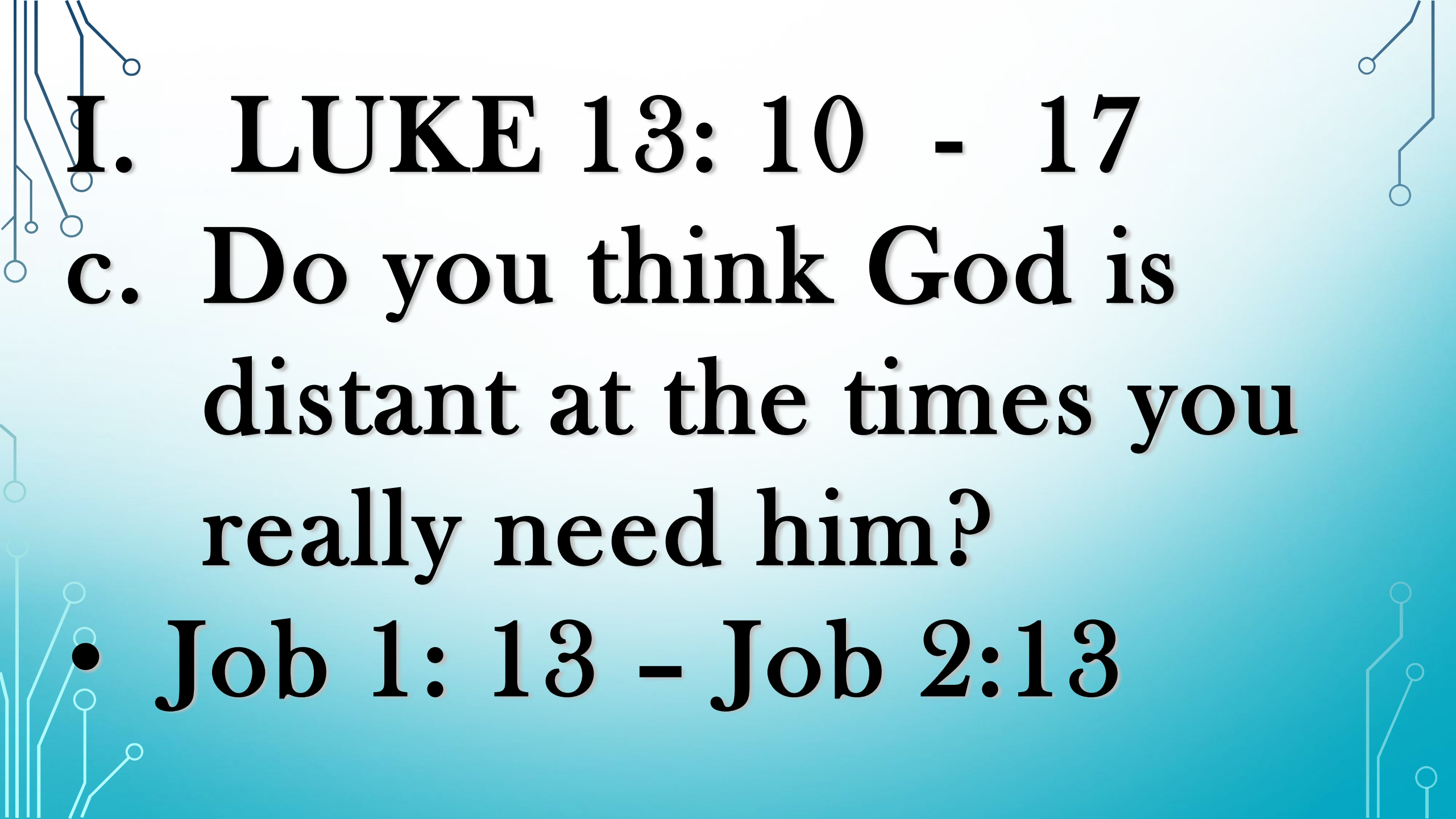
a. Synopsis



I. LUKE 13: 10 - 17

**b. Are you being faithful
despite the load you are
carrying?**

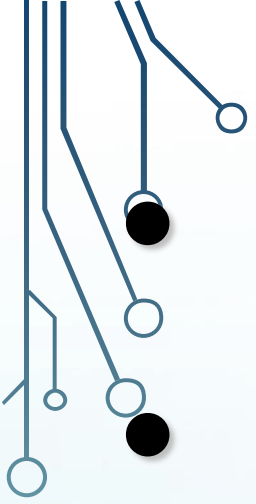
- **Luke 1: 7 - 8**



I. LUKE 13: 10 - 17

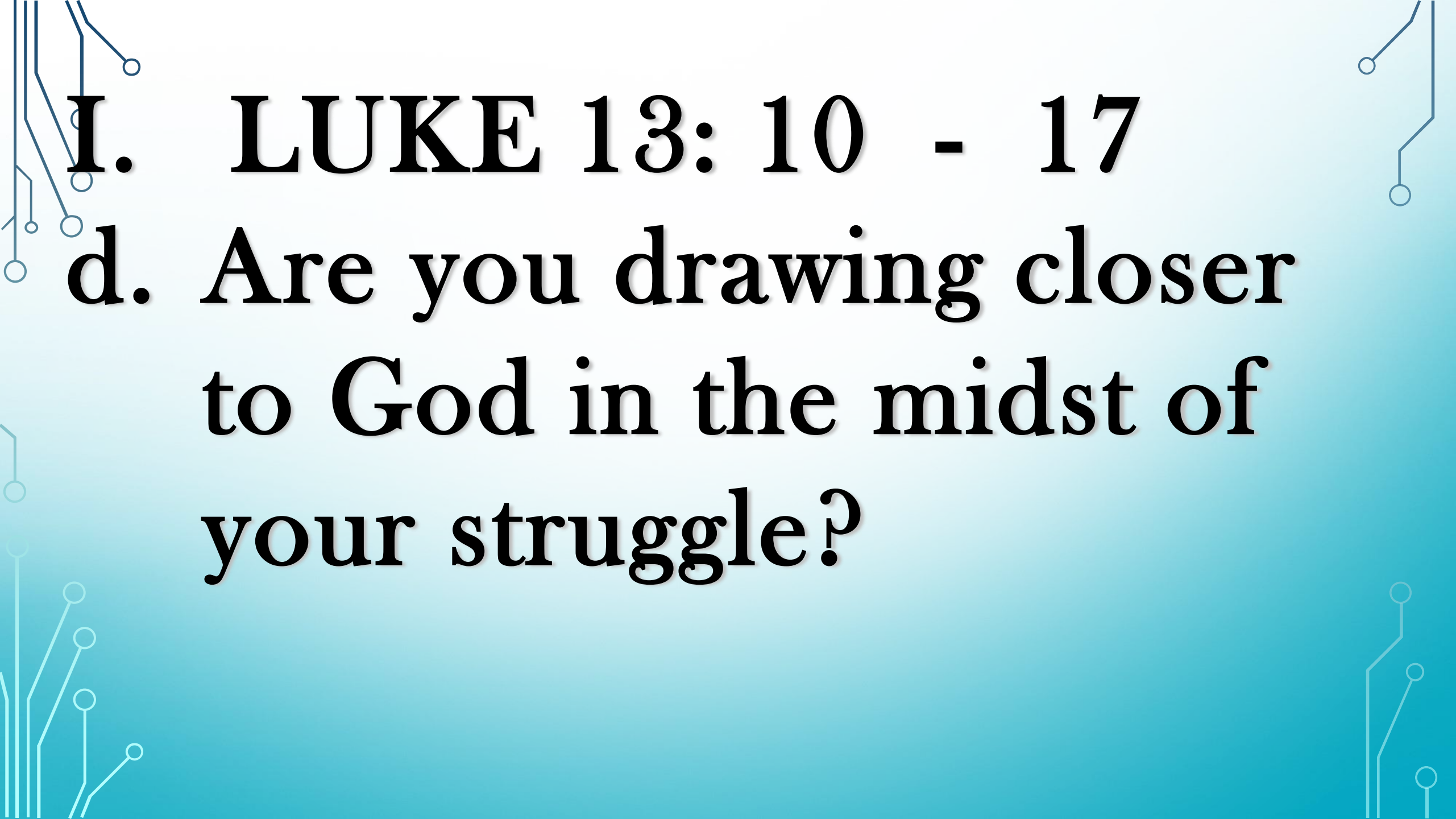
**c. Do you think God is
distant at the times you
really need him?**

- Job 1: 13 – Job 2:13**



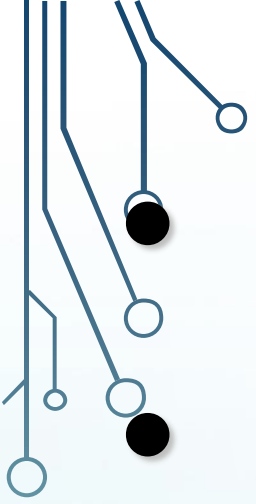
Job 2:9

Luke 13: 12



I. LUKE 13: 10 - 17

**d. Are you drawing closer
to God in the midst of
your struggle?**



- **Luke 13: 12**
- **John 5: 2 - 9**
- **Luke 13: 13**
- **Luke 8: 43 - 48**

I. LUKE 13: 10 - 17

**e. Are you glorifying God
publicly like you ought to?**

- **Luke 13:13**
- **Exodus 15: 11**